



POST FRAME BUILDING MATERIALS



MENARDS[®] YOUR COMPLETE POST FRAME SUPPLIER

ADVANTAGES OF A POST FRAME



Convenience www.menards.com/postframe

- Over 300 Menards stores
- Online Program available 24/7

Cost Efficient

- No foundation required
- Fewer materials

Speed of Installation

- Building goes up faster
- Less time on jobsite

Durability

- Proven designs since the 1930's
- Strength in steel roofing and siding

Engineering

- Stamped & sealed prints available
- Full Engineering staff

Taller Side-Walls

- Larger door openings
- Allows for large open spaces

Energy Efficient

- More insulation
- Less vertical framing

Flexibility

- Ease of adding lean to's & porches
- Open floor plan and large clear spans

Versatile

- Unlimited variety of uses for any building
- All roofing, siding, and interior finish options



Agricultural



Residential



Commercial

POST FRAME ONLINE

3 WAYS TO BUY

MENARDS.com  Keyword: POST FRAME



Prepriced Post Frames

Get a quick estimate on predesigned buildings in multiple sizes. Search through hundreds of predesigned buildings including:

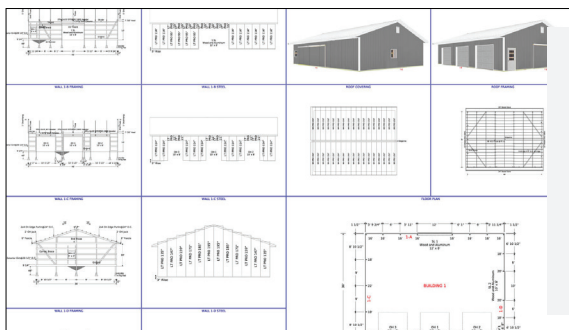
- Agricultural
- Equestrian
- Garage
- Loafing Sheds
- And many more styles



Post Frame Estimator

Bring your ideal Post Frame building to life from the convenience of your own home with our Online Post Frame Store. Design to your own specifications.

- Size
- Leans
- Steel and Colors
- Overhangs
- Doors
- Accessories



Engineering Services

For more complex buildings or buildings requiring engineering, use our Engineering Services.

- Prints
- Stamps and Seals
- Building Renderings
- Building Engineering
- Perspectives

LAMINATED COLUMNS

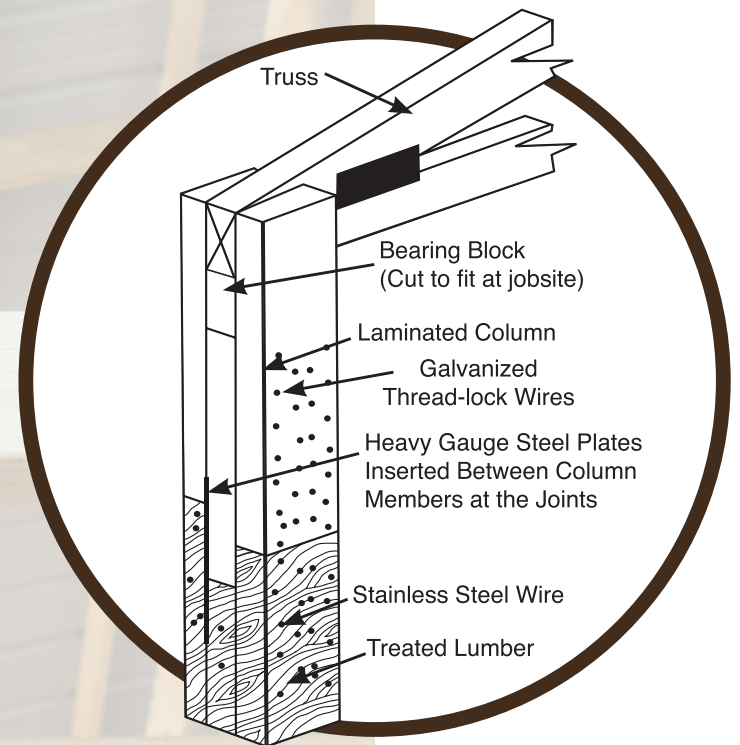
Laminated columns are an engineered product designed for use on large or tall building applications. They feature a CCA treated base for all areas that are below ground and an untreated top portion.

Thread locked wires are driven straight through all of the layers of a laminated column and then rivet clenched on both sides to provide superior holding power. Galvanized thread lock wire is used in all areas of the column except for the treated portion that will contact the ground. This area uses stainless steel wire.

Each splice joint includes a 20-gauge stainless steel plate which helps provide maximum strength at the joint.

Columns are designed with a bearing block notch in the center, which provides an area for the truss to rest. This eliminates notching of a timber with a chain saw.

In-stock laminated columns are available in 3 ply 2x6 columns made from #1 grade Southern Yellow Pine and are available in 16' to 22' lengths. Special order columns can be designed to meet your building needs in 3, 4, or 5 plys and up to 60' in length.

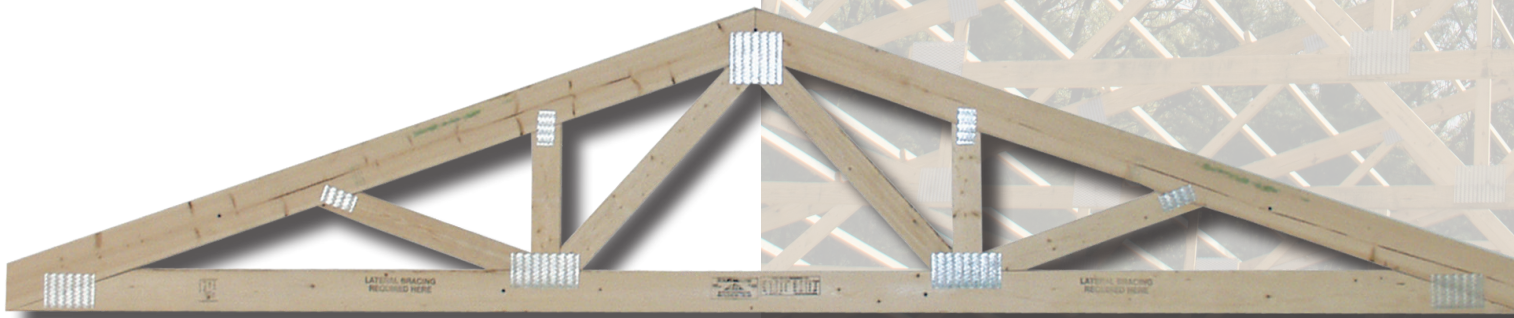


POST FRAME TRUSSES

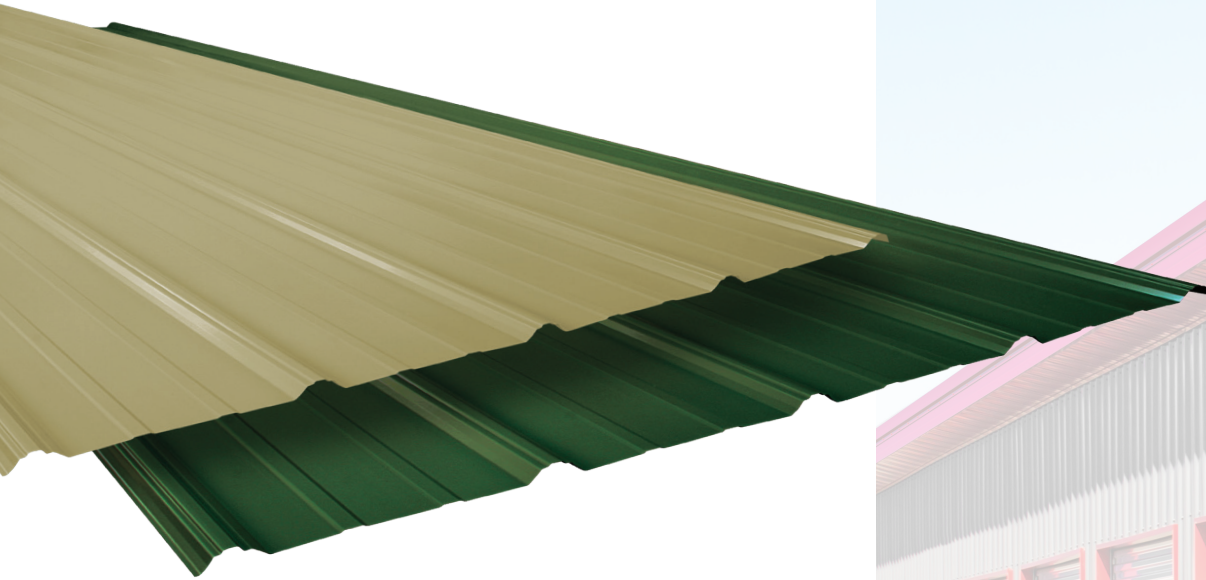
In-stock post frame trusses are professionally designed to be used on 6', 8' or 9' on center spacing. Each truss is professionally designed, precision cut and assembled at our state of the art facilities. Each truss bears the Truss Plate Institute (TPI) stamp for quality assurance.

In-stock trusses have a 4/12 pitch 50' and 60' trusses are only available for pick up or jobsite delivery; cannot be delivered to a store

Midwest Manufacturing Truss can also custom design post frame trusses for any agricultural, residential, commercial or industrial needs. Design and engineering services are available to create a building for any need.



STEEL PANELS



Pro-Rib® & Premium Pro-Rib®

- Available in 24 panel colors – plus copper colored in Premium Pro-Rib
- Trim available in all colors
- Zinc Phosphate pre treatment
- Coil coating “paint” process ASTM-A755
- Structural strength ASTM-A653
- Grade 80 full hard steel
- 100,000 p.s.i. Nominal tensile strength
- UL 2218 Class 4 Hail resistance
- UL 580 Class 90 wind uplift
- UL 790 Class A fire resistance



The leading steel panel in the post frame industry, offered at competitive prices and is comparable with nearly all of the steel panels on the market today.

- .0165" nominal thickness after painting
- G-60 Galvanized coating plus zinc phosphate
- Limited 40 year paint warranty



One of the most versatile members of the Pro-Rib® family of quality products. It is truly a premium wall and roof panel whose applications span a tremendous variety of residential, commercial, and industrial construction projects. The superior performance of the Premium Paint System sets this panel apart from the crowd.

- .018" nominal thickness after painting
- G-100 Galvanized coating plus zinc phosphate
- Limited lifetime paint warranty

STEEL TRIM

No building is complete without finishing trims. Midwest Manufacturing® Steel Plant creates trim to match all 25 of our Pro-Rib® and Premium Pro-Rib® colors. Trims are made from Premium material and carry a lifetime limited paint warranty.

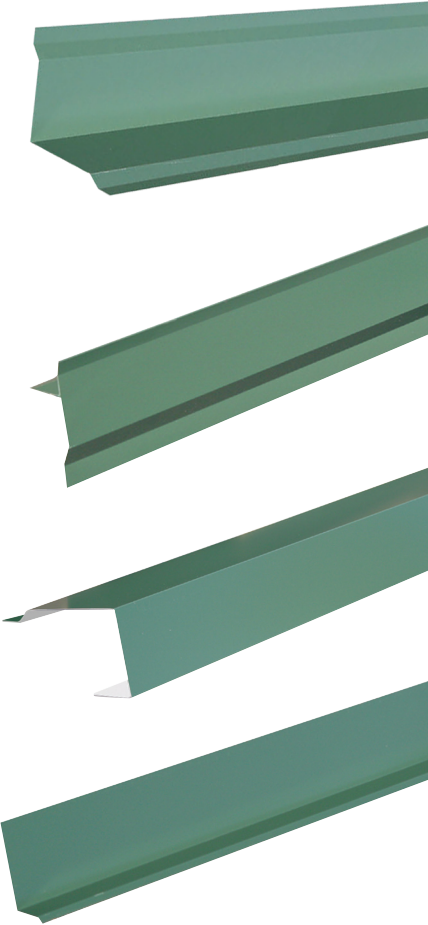
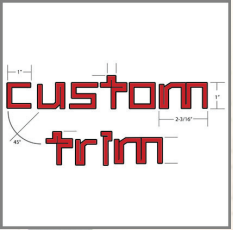
With over 200 in-stock trim styles and sizes for post frame building and residential steel roof applications, we have a trim for every application and can have it ready fast! at our 3 locations



Trim coils available in 10 different widths for on-site bending



Specialty trim can be custom bent to order to complete any project



ENGINEERING PRINTS

Code Exempt Print

Custom drawn prints that are specific to your building. Available for buildings and structures that do not require a licensed engineer to review and seal.

(1) Code Exempt 24x36 hard copy is mailed to you and a 24x36 PDF is emailed directly to you. Code Exempt Prints contain:

- Floor Plan
- Framing Views
- Steel Layout
- Trim Details
- Bracing Details
- Header Details

Perspective Print

Colored 3D view of your building on a white background. Great concept drawing to show features of the building for committee or board meetings. Shows building features, windows, service doors, and overhead doors. No foreground or background components included.

Perspective Prints are emailed as 8 1/2x11 PDFs directly to you and contain (1) 3D view of the building.

Perspective Print Rendering

Colored 3D view of your building with foreground and background components. More detailed concept drawing to show features and placement of the building for committee or board meetings. Can contain streets, parking, landscaping, etc against a background of the country, city, forest, etc. Shows building features, windows, service doors, and overhead doors as well as landscape around it.

(1) Display Quality Rendering is printed on 24x36 photo quality paper and mailed directly to you.

Engineered Print

Professionally engineered, stamped and sealed drawings of your specific building that have been reviewed and sealed by a licensed Professional Engineer or Structural Engineer. Engineered Structures have been designed to specific building code and wind, snow, and seismic requirements.

(5) sets of 24x36 sealed structural prints and truss specification sheets are mailed directly to you.

Additional sets are available for purchase. Engineered Prints contain:

- Foundation Design
- Site Plan
- Elevations
- Floor Plan
- Roof Framing Plan
- Section Views
- Steel Layouts
- Panel Application Details
- Trim Details
- Bracing Details
- Header Details
- Special Item Designs (Mezzanines, Firewalls, Drift Areas, etc)
- Truss Specification Sheets





For Questions send an email to: PF@MidwestManufacturing.com

MENARDS.com  Keyword: **POST FRAME**