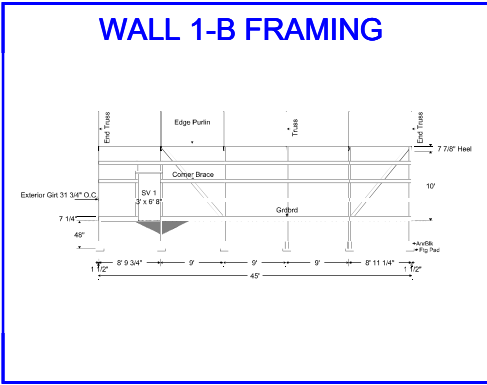


# WALL 1-A FRAMING

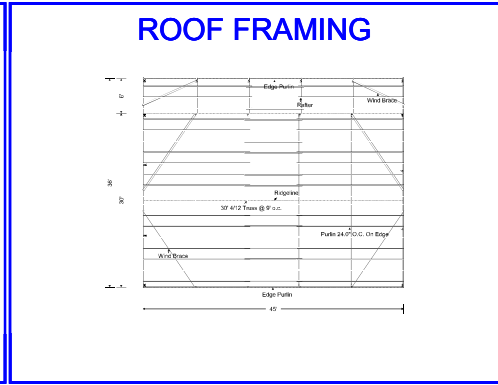
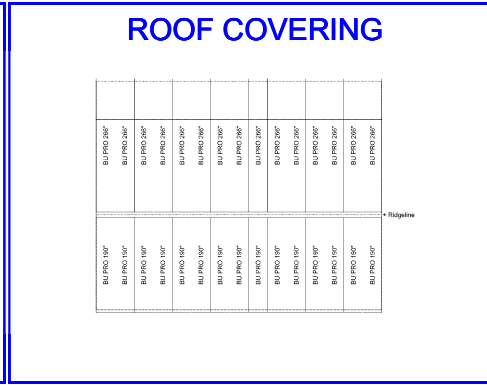


# WALL 1-A STEEL

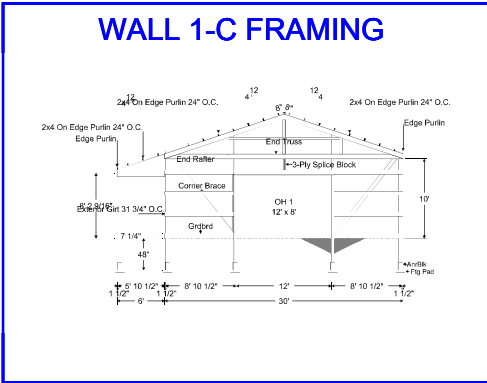
BU PRO 128"
BU PRO 128"
BU PRO 126"
BU PRO 128"
BU PRO 128"
BU PRO 128"
BU PRO 128"
BU PRO 126"
BU PRO 128"
BU PRO 128"
BU PRO 128"
BU PRO 128"
BU PRO 128"
BU PRO 128"
BU PRO 128"

$\frac{1}{8}$ "  
3" Rise

# WALL 1-B STEEL



# WALL 1-B FRAMING

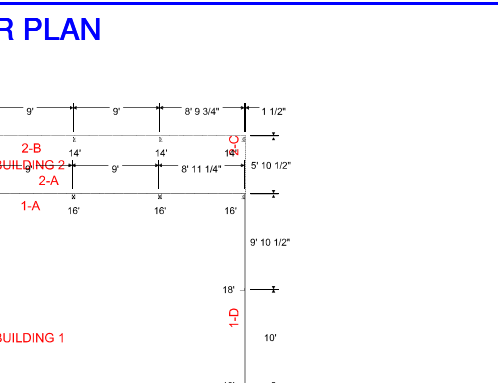


# WALL 1-B STEEL

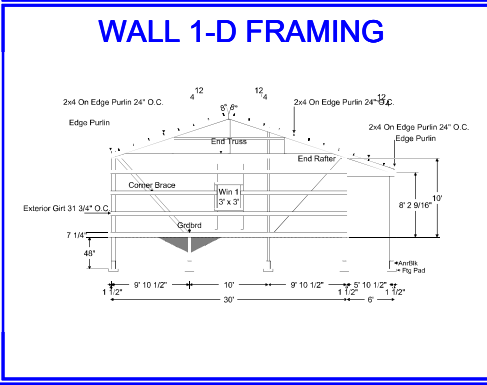
# WALL 1-C STEEL

# ROOF COVERING

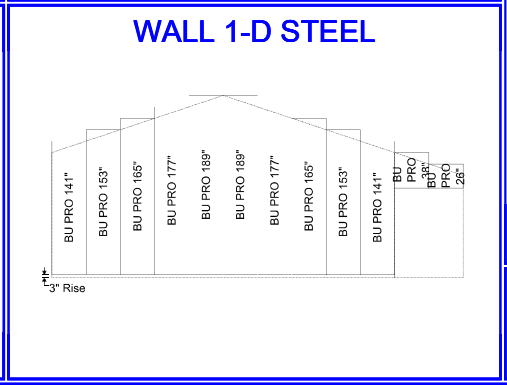
# ROOF FRAMING



# WALL 1-C FRAMING



# WALL 1-C STEEL

[illegible]

# WALL 1-D STEEL



# FLOOR PLAN

The floor plan shows a rectangular building layout with overall dimensions of 45' by 36'. The plan is divided into several sections labeled 1-A, 1-B, 1-C, 2-A, and 2-B. Section 1-C is a small rectangular area on the left side, labeled 'Ch 1 12' x 8\"

Section	Dimensions	Notes
1-A	16' x 16'	
1-B	16' x 16'	
1-C	12' x 8'	Ch 1
2-A	14' x 14'	
2-B	14' x 14'	

**ADDITIONAL DIMENSIONS:**

- Overall width: 45'
- Overall height: 36'
- Section 1-A: 16' x 16'
- Section 1-B: 16' x 16'
- Section 1-C: 12' x 8'
- Section 2-A: 14' x 14'
- Section 2-B: 14' x 14'

**DISCLAIMER:** Material Views, steel views, and floor plan are not to scale.

**ERRORS AND OMISSIONS:** MIDWEST INC. is unable to accept liability for any errors or omissions in excess of the original purchase price for these plans. Consequently, builders must carefully check all details and information in these drawings including dimensioning, material quantities and availability of the products specified. Any errors or omissions found should be reported immediately to Midwest Manufacturing, 5311 Kane Road, Eau Claire, WI 54603.

**ADAPTATION AND UTILIZATION OF THIS PLAN**

These plans have been professionally prepared to conform to most generally accepted construction requirements throughout North America, however due to local codes, regulations, and building practices and/or because of specific site conditions, these drawings may not be suitable or legal for use in the construction of this building in all localities. Consequently, these drawings are not to be used as a guide for construction unless the builder has confirmed their suitability or until the drawings have been brought into conformity with all local requirements.



**ERRORS AND OMISSIONS**  
MENARD INC. is unable to accept liability for any errors or omissions in excess of the original purchase price for these plans. Consequently, builders must carefully check all details and information in these drawings including dimensioning, material quantities and availability of the products specified. Any errors or omissions found should be reported immediately to Midwest Manufacturing, 5311 Kane Road, Eau Claire, WI 54703

#### ADAPTATION AND UTILIZATION OF THIS PLAN

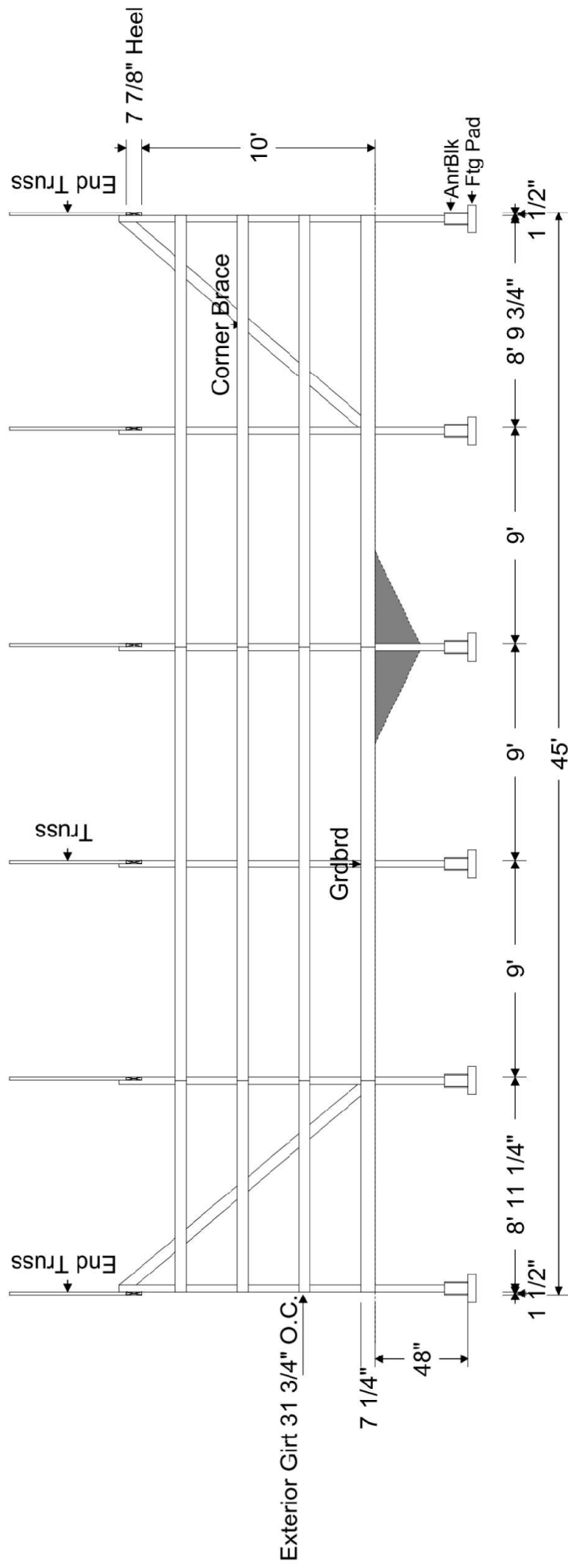
These plans have been professionally prepared to conform to most generally accepted construction requirements throughout North America, however due to local codes, regulations, and building practices and or because of specific site conditions, these drawings may not be suitable or legal for use in the construction of this building in all localities. Consequently, these drawings are not to be used as a guide for construction unless the builder has confirmed their suitability or until the drawings have been brought into conformity with all local requirements.

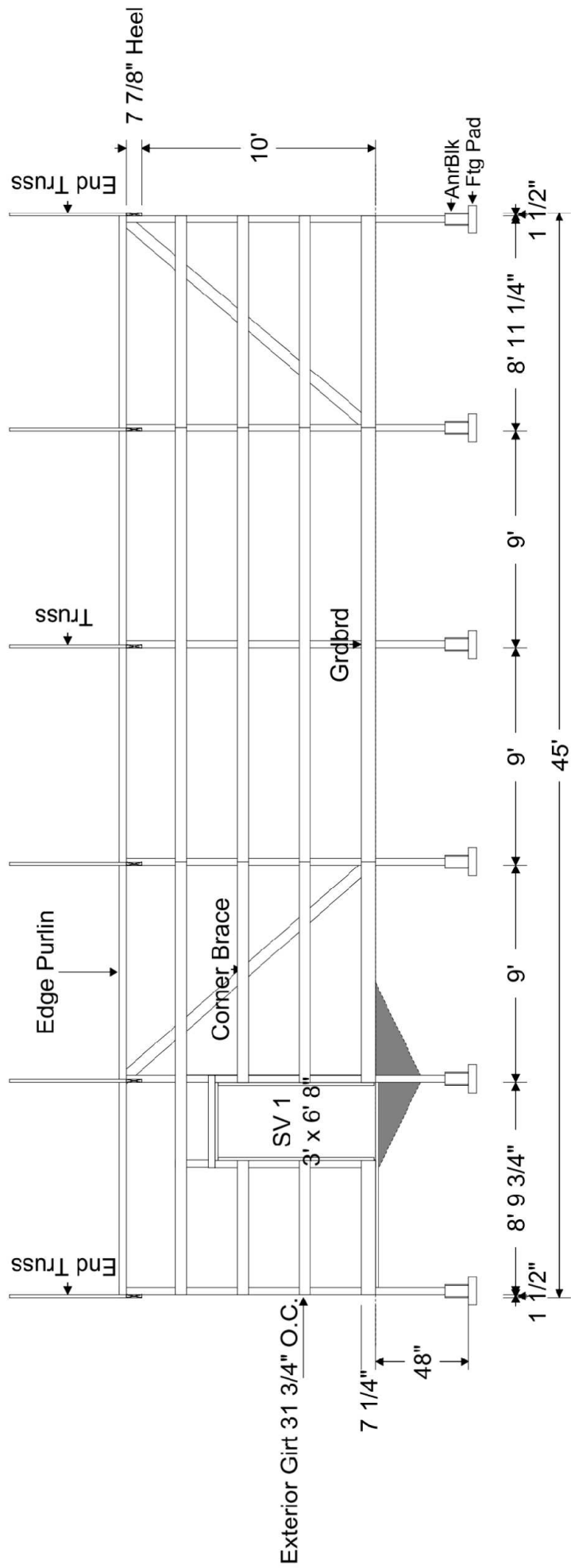


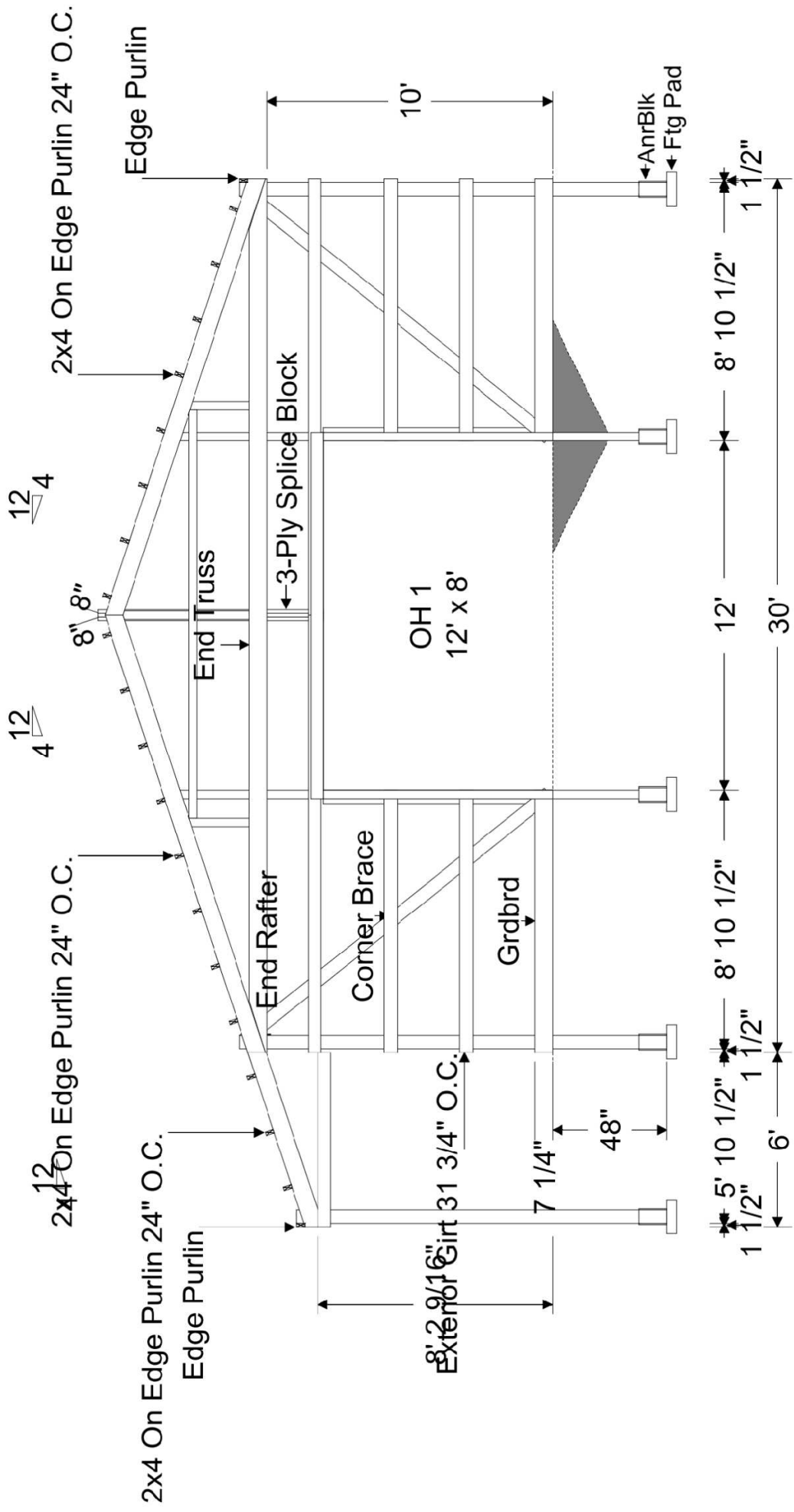
The floor plan shows two buildings. Building 1 is a large rectangular structure with a total width of 45' and a total depth of 36'. It is divided into several sections: 1-A (top center), 1-B (bottom center), 1-C (left side), and 1-D (right side). Building 2 is a smaller rectangular structure located to the right of Building 1, with a total width of 14' and a total depth of 10'. It is divided into sections 2-A (top center) and 2-B (bottom center). The plan also shows a 3' x 6' 8" area labeled SV 1 and a 12' x 8' area labeled OH 1. Dimensions are provided for all sections and overall building sizes.



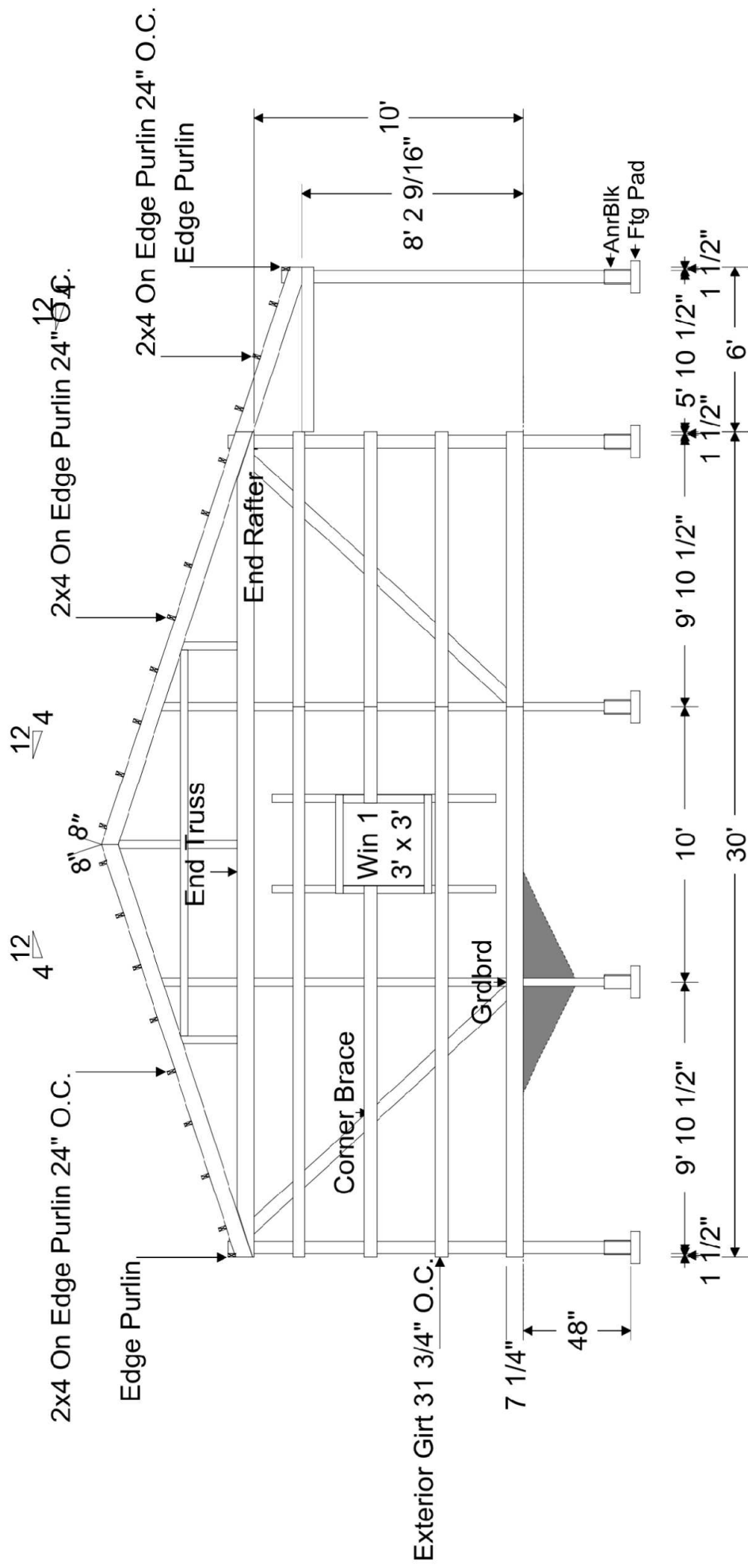
[illegible]

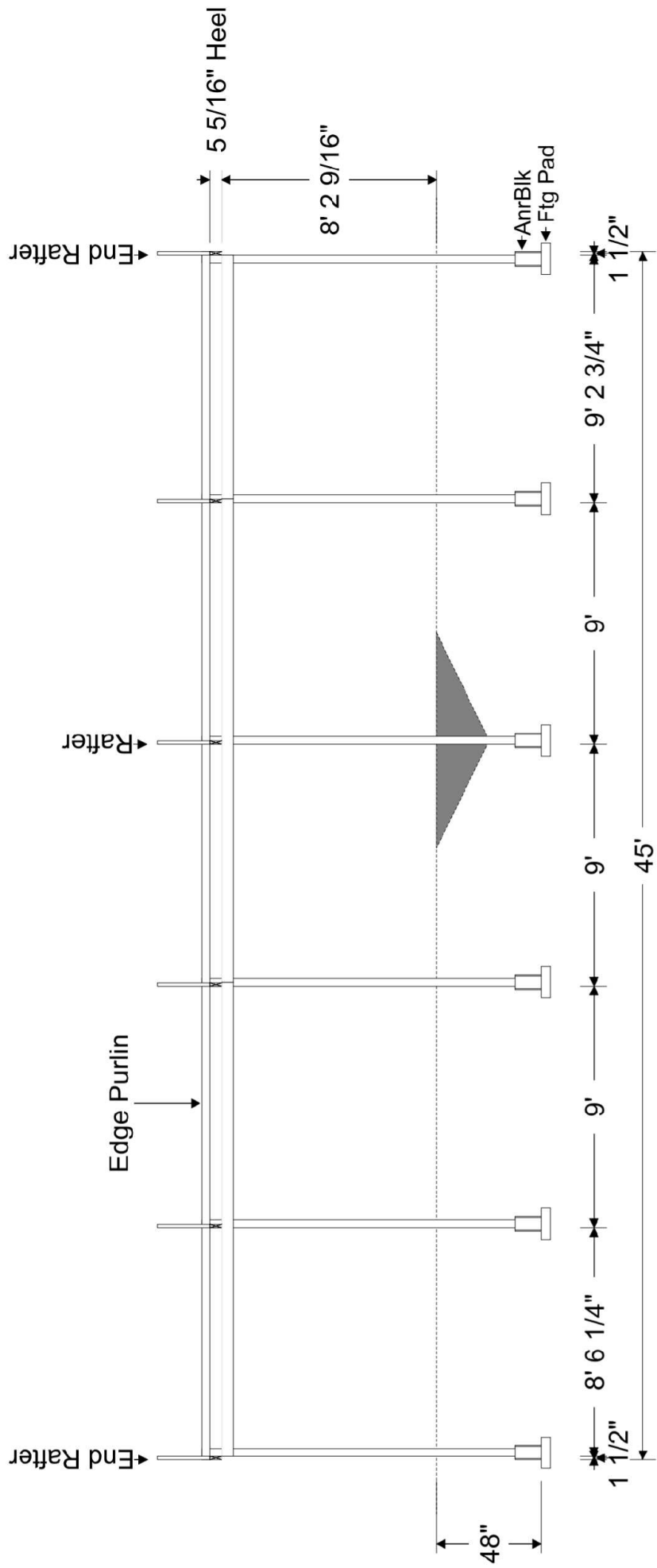








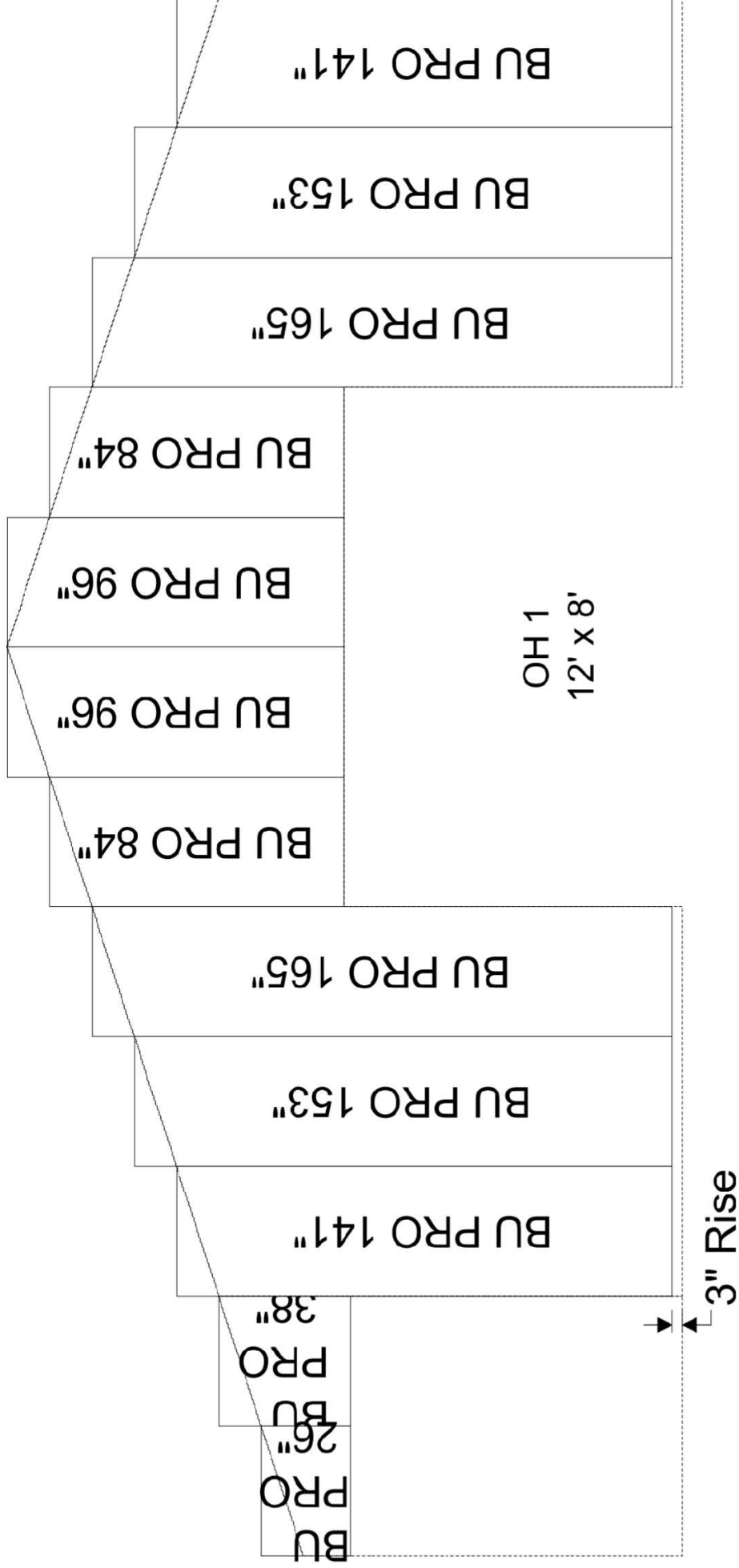


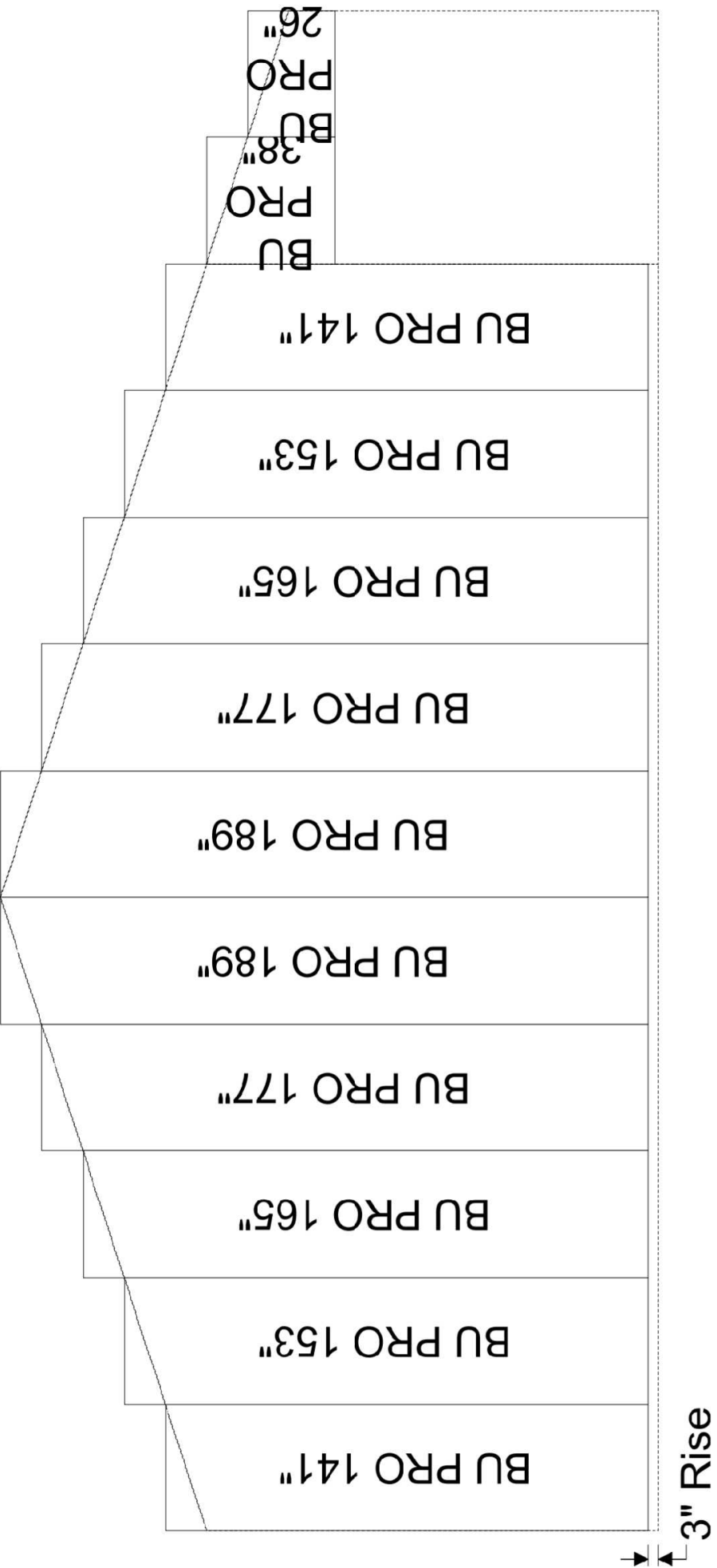


[illegible]

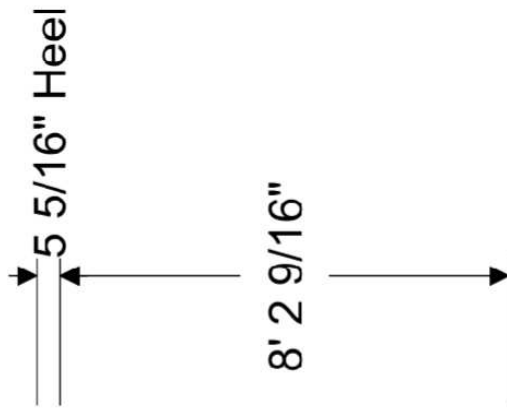
3" Rise



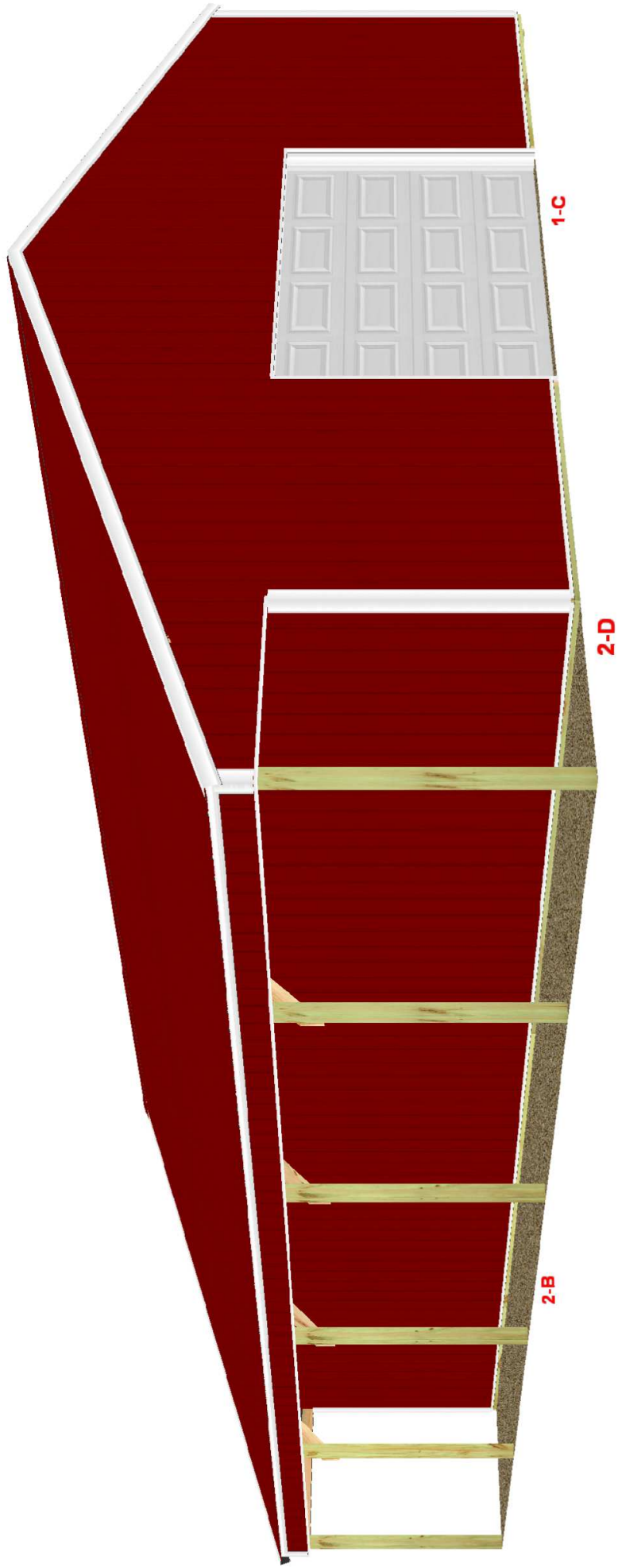


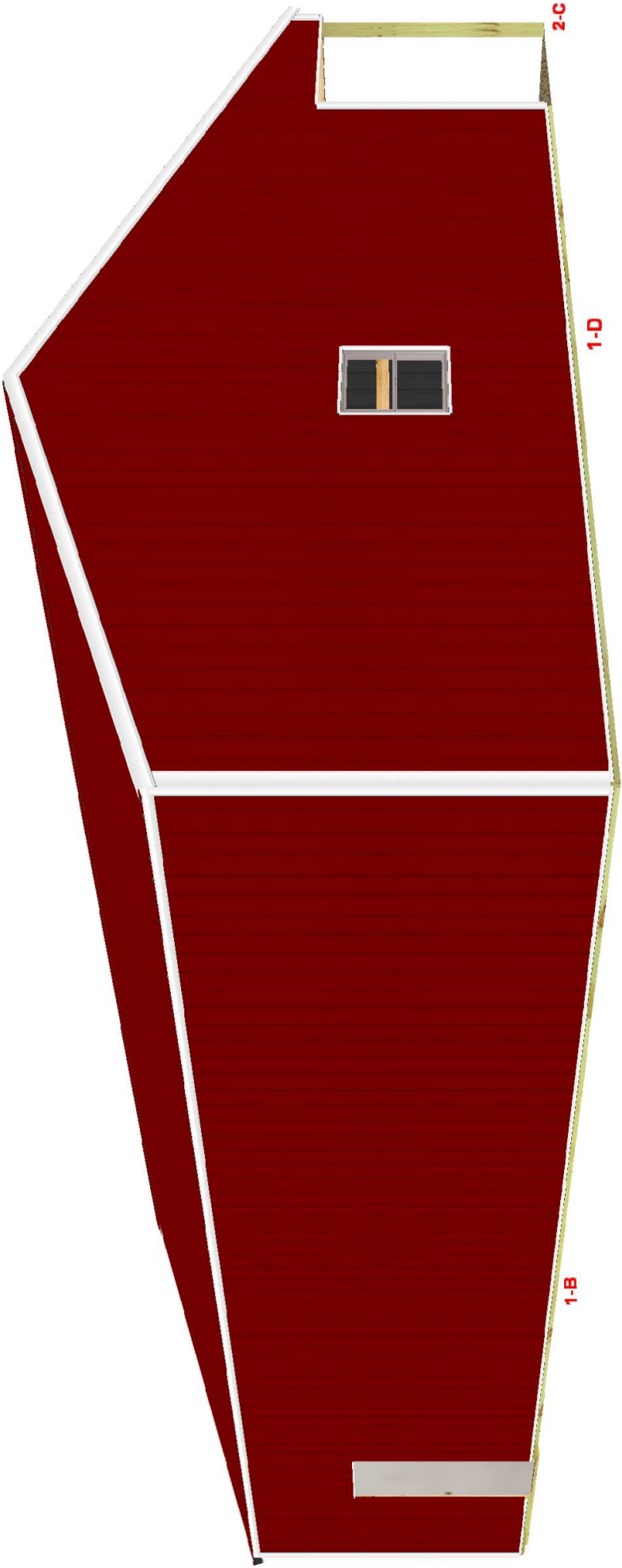


[illegible]

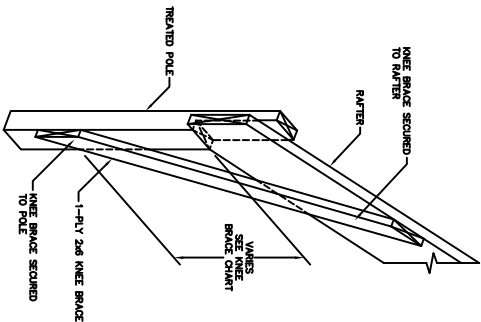
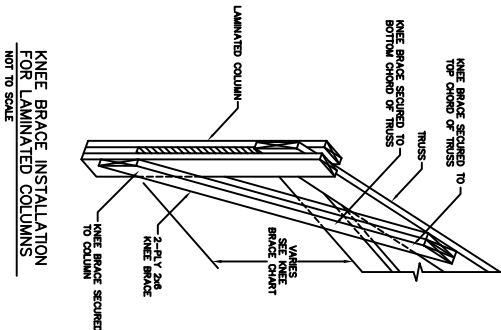
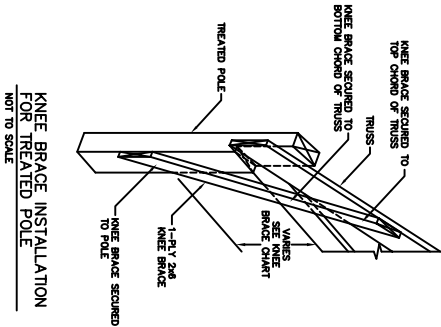
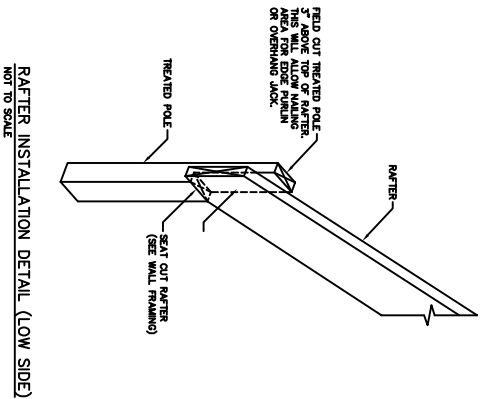
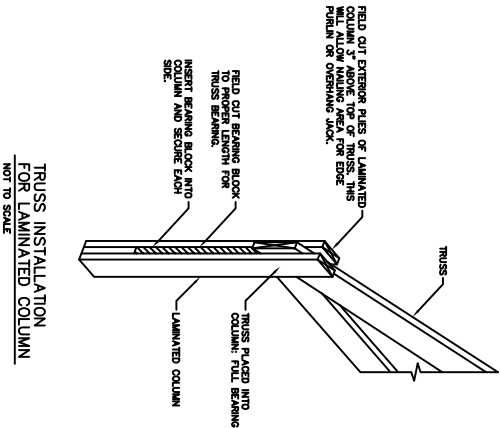
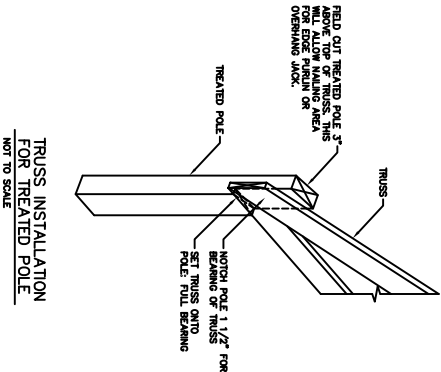






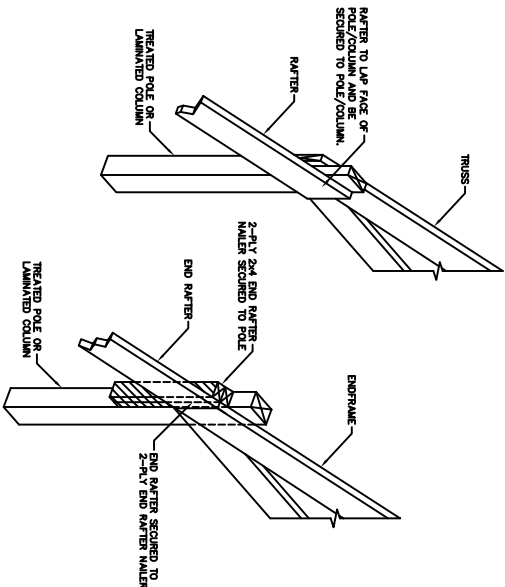


TRUSS, RAFTER, AND KNEE BRACE DETAILS

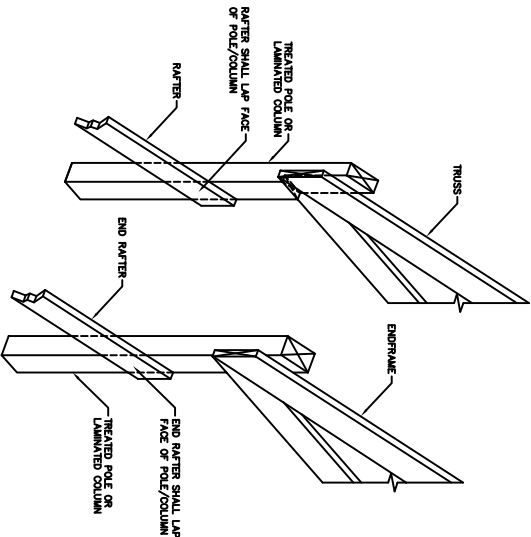


KNEE BRACE CHART	
WALL HEIGHT	DIMENSION
8'-0"	1'-6" (TRUSS TO BOTTOM OF BRACE)
9'-0"	1'-6" (TRUSS TO BOTTOM OF BRACE)
10'-0"	2'-0" (TRUSS TO BOTTOM OF BRACE)
11'-0"	2'-0" (TRUSS TO BOTTOM OF BRACE)
12'-0"	2'-0" (TRUSS TO BOTTOM OF BRACE)
13'-0"	3'-0" (TRUSS TO BOTTOM OF BRACE)
14'-0"	3'-0" (TRUSS TO BOTTOM OF BRACE)
15'-0"	4'-0" (TRUSS TO BOTTOM OF BRACE)
16'-0"	4'-0" (TRUSS TO BOTTOM OF BRACE)
17'-0"	4'-0" (TRUSS TO BOTTOM OF BRACE)
18'-0"	4'-0" (TRUSS TO BOTTOM OF BRACE)
19'-0"	4'-0" (TRUSS TO BOTTOM OF BRACE)
20'-0"	4'-0" (TRUSS TO BOTTOM OF BRACE)

RAFTER DETAILS

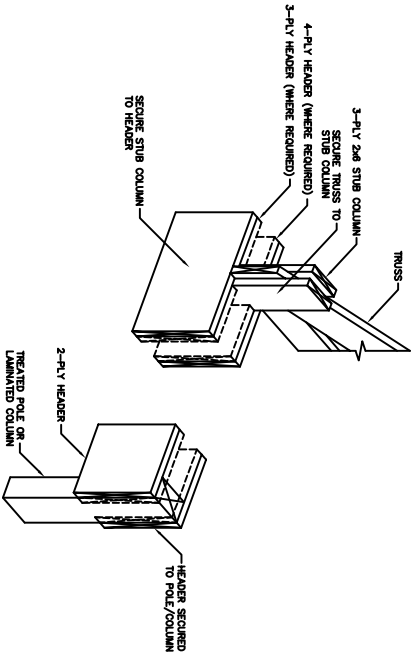


RAFTER INSTALLATION DETAIL  
(HIGH SIDE) (LEAN OFF EAVE)  
NOT TO SCALE



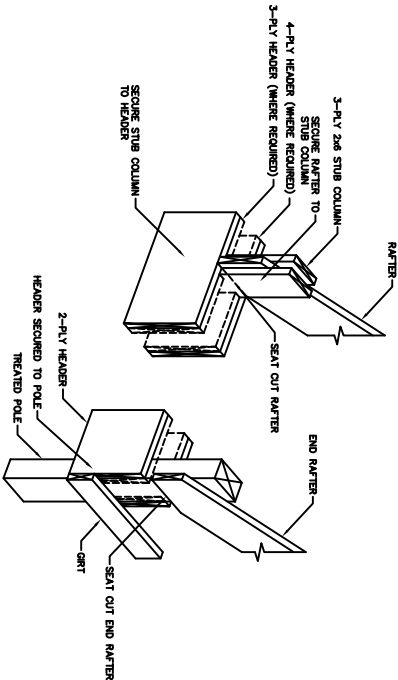
RAFTER INSTALLATION DETAIL  
(HIGH SIDE) (DROPPED LEAN)  
NOT TO SCALE

HEADER DETAILS



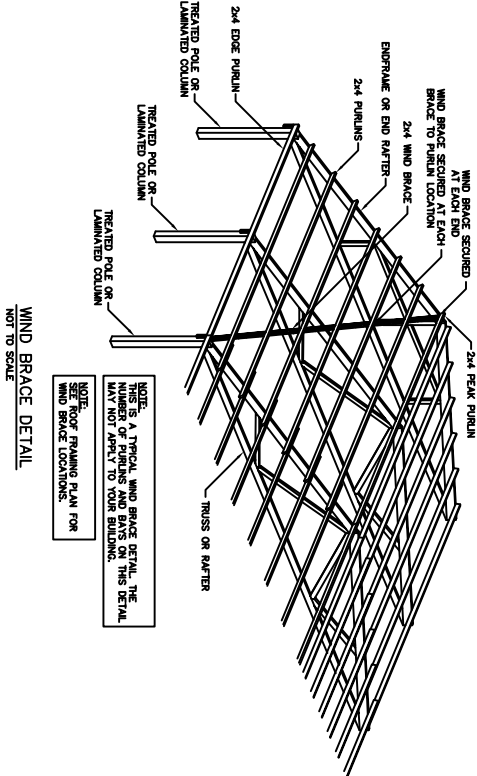
HEADER FRAMING DETAIL  
NOT TO SCALE

HEADER NOTCH SCHEDULE	
HEADER PILES	DIMENSIONAL LUMBER
2-PLY HEADER	1-PLY FACE NAILED TO POLE AT EXTERIOR & 1-PLY FACE NAILED TO POLE AT INTERIOR
2-PLY HEADER	2-PILES NOTCHED 1 1/2" INTO POLE AT EXTERIOR & 1-PLY NOTCHED 1 1/2" INTO POLE AT INTERIOR
2-PLY HEADER	2-PILES NOTCHED 1 1/2" INTO POLE AT EXTERIOR & 2-PILES NOTCHED 1 1/2" INTO POLE AT INTERIOR
HEADER PILES	1x6 LUMBER
2-PLY HEADER	1-PLY NOTCHED 1 1/4" INTO POLE AT EXTERIOR & 1-PLY NOTCHED 1 1/4" INTO POLE AT INTERIOR
2-PLY HEADER	1-PLY NOTCHED 1 1/4" INTO POLE AT EXTERIOR & 1-PLY NOTCHED 1 1/4" INTO POLE AT INTERIOR
2-PLY HEADER	2-PILES NOTCHED 2" INTO POLE AT EXTERIOR & 2-PILES NOTCHED 2" INTO POLE AT INTERIOR

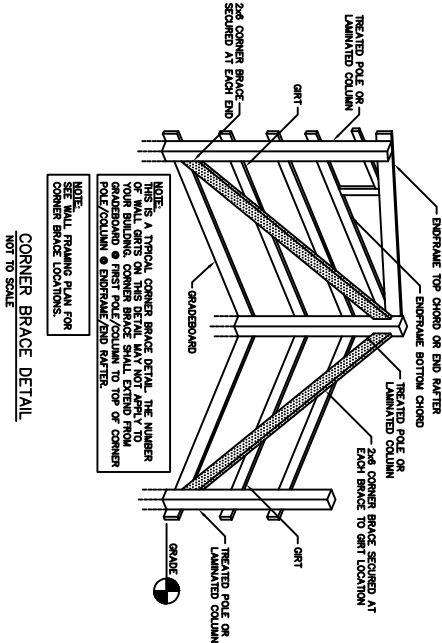


RAFTER HEADER INSTALLATION DETAIL (LOW SIDE)  
NOT TO SCALE

WIND AND CORNER BRACE DETAILS

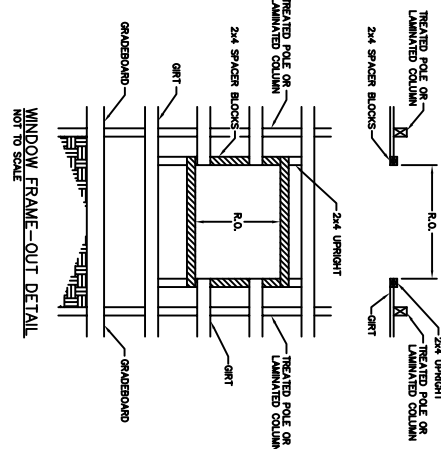
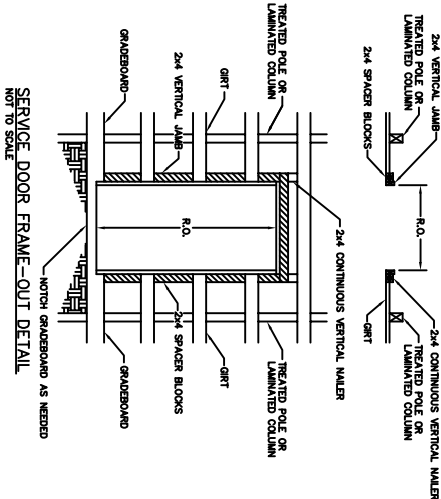


WIND BRACE DETAIL  
NOT TO SCALE



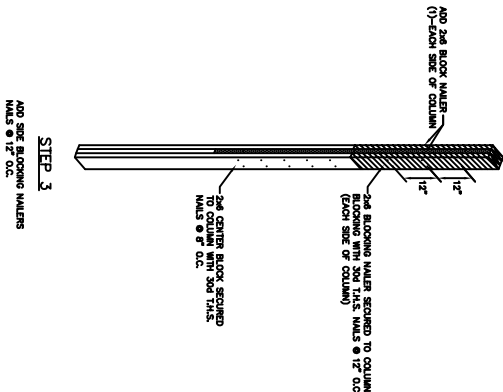
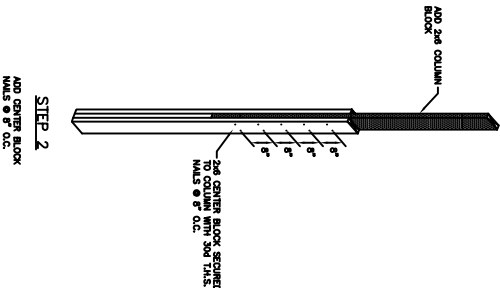
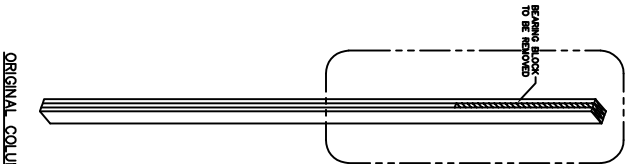
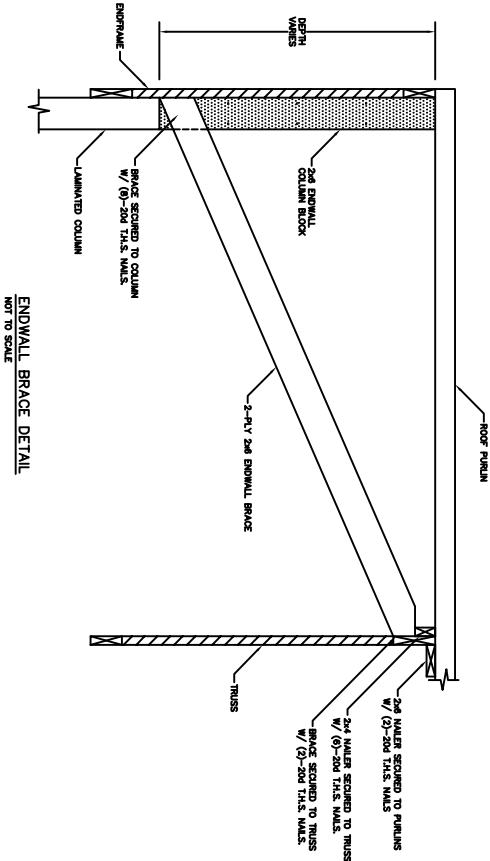
CORNER BRACE DETAIL  
NOT TO SCALE

SERVICE DOOR AND WINDOW DETAILS



ENDWALL COLUMN BLOCK EXTENSION AND ENDWALL BRACE DETAILS

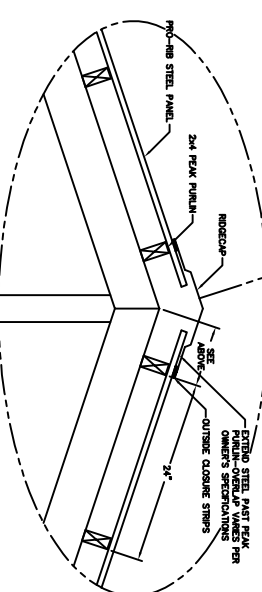
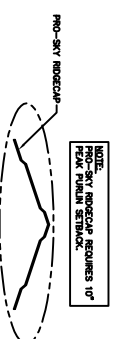
COLUMN BLOCK EXTENSIONS						
OVERALL COLUMN LENGTH	COLUMN LENGTH	OVERALL BLOCK LENGTH REQUIRED	LEFT ELY	CENTER ELY	RIGHT ELY	2x6 MEMBER
18"	18"	N/A	N/A	N/A	N/A	N/A
20"	20"	N/A	N/A	N/A	N/A	N/A
22"	22"	N/A	N/A	N/A	N/A	N/A
24"	24"	N/A	N/A	N/A	N/A	N/A
26"	26"	N/A	N/A	N/A	N/A	N/A
28"	28"	N/A	N/A	N/A	N/A	N/A
30"	30"	N/A	N/A	N/A	N/A	N/A
32"	32"	N/A	N/A	N/A	N/A	N/A
34"	34"	N/A	N/A	N/A	N/A	N/A
36"	36"	N/A	N/A	N/A	N/A	N/A
38"	38"	N/A	N/A	N/A	N/A	N/A
40"	40"	N/A	N/A	N/A	N/A	N/A
42"	42"	N/A	N/A	N/A	N/A	N/A
44"	44"	N/A	N/A	N/A	N/A	N/A
46"	46"	N/A	N/A	N/A	N/A	N/A
48"	48"	N/A	N/A	N/A	N/A	N/A
50"	50"	N/A	N/A	N/A	N/A	N/A
52"	52"	N/A	N/A	N/A	N/A	N/A
54"	54"	N/A	N/A	N/A	N/A	N/A
56"	56"	N/A	N/A	N/A	N/A	N/A
58"	58"	N/A	N/A	N/A	N/A	N/A
60"	60"	N/A	N/A	N/A	N/A	N/A
62"	62"	N/A	N/A	N/A	N/A	N/A
64"	64"	N/A	N/A	N/A	N/A	N/A
66"	66"	N/A	N/A	N/A	N/A	N/A
68"	68"	N/A	N/A	N/A	N/A	N/A
70"	70"	N/A	N/A	N/A	N/A	N/A
72"	72"	N/A	N/A	N/A	N/A	N/A
74"	74"	N/A	N/A	N/A	N/A	N/A
76"	76"	N/A	N/A	N/A	N/A	N/A
78"	78"	N/A	N/A	N/A	N/A	N/A
80"	80"	N/A	N/A	N/A	N/A	N/A
82"	82"	N/A	N/A	N/A	N/A	N/A
84"	84"	N/A	N/A	N/A	N/A	N/A
86"	86"	N/A	N/A	N/A	N/A	N/A
88"	88"	N/A	N/A	N/A	N/A	N/A
90"	90"	N/A	N/A	N/A	N/A	N/A
92"	92"	N/A	N/A	N/A	N/A	N/A
94"	94"	N/A	N/A	N/A	N/A	N/A
96"	96"	N/A	N/A	N/A	N/A	N/A
98"	98"	N/A	N/A	N/A	N/A	N/A
100"	100"	N/A	N/A	N/A	N/A	N/A



ENDWALL COLUMN BLOCK EXTENSION DETAIL

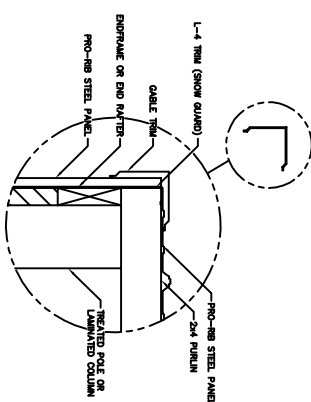
NOT TO SCALE

## TRIM DETAILS

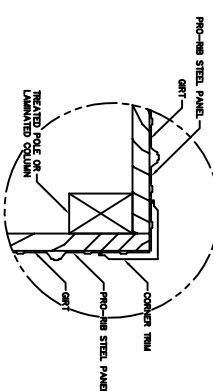


**NOTE:**  
2x4 PEAK PURLINS BUTTED END TO END AND  
ALL OTHER PURLINS WILL OVERLAP 6" MIN.

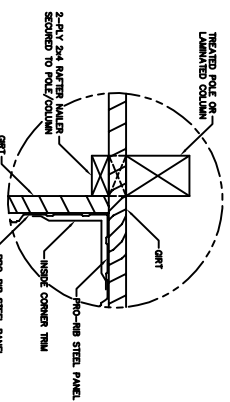
**RIDGE TRIM DETAIL**  
**NOT TO SCALE**



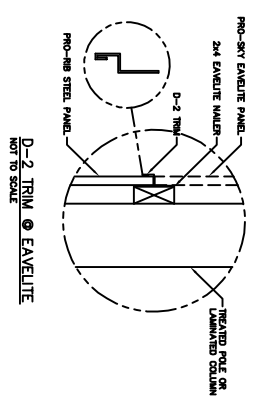
**CABLE TRIM DETAIL**  
**NOT TO SCALE**



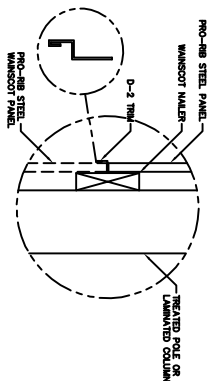
**CORNER TRIM DETAIL**  
**NOT TO SCALE**



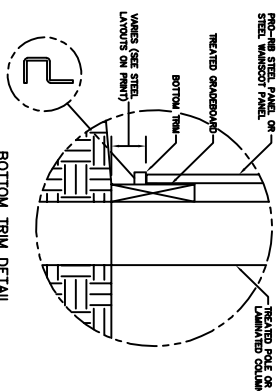
### INSIDE CORNER TRIM DETAIL



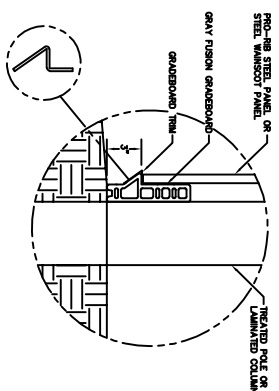
**D-2 TRIM @ EAVELITE**  
**NOT TO SCALE**



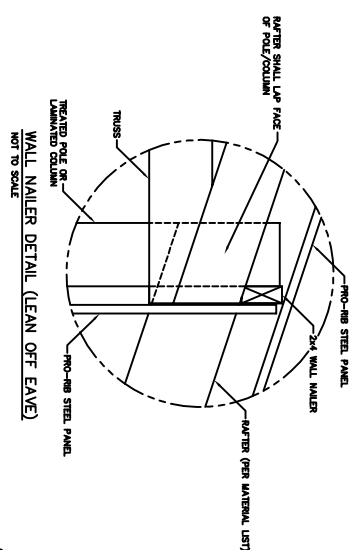
**D-2 TRIM @ WAINSCOT**  
**NOT TO SCALE**



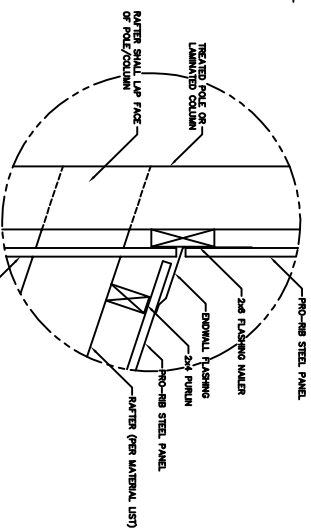
**BOTTOM TRIM DETAIL**  
**NOT TO SCALE**



**COMPOSITE GRADEBOARD DETAIL**



**WALL NAILER DETAIL (LEAN OFF EAVE)**  
**NOT TO SCALE**



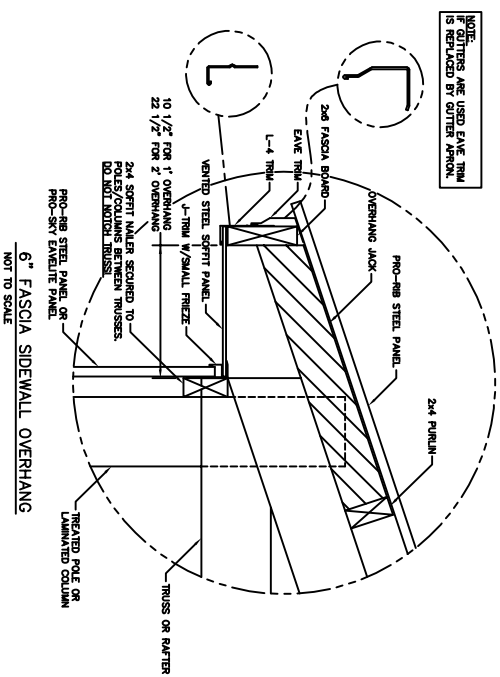
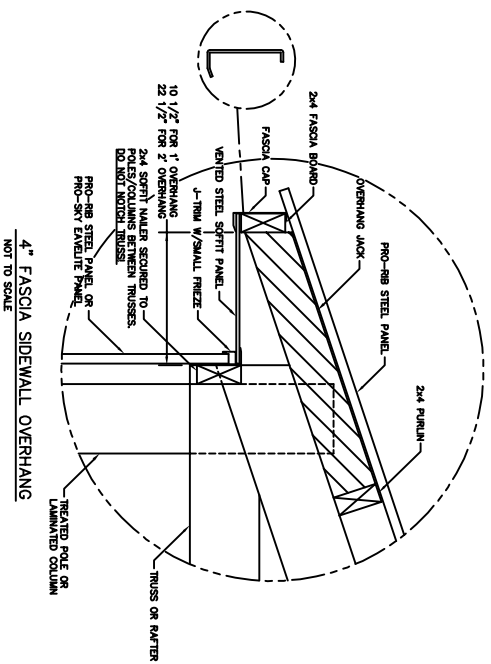
### ENDWALL FLASHING DETAIL (DROPPED LEAN)

**NOTE:**  
PRO-SKY RIDGECAP REQUIRES 10" PEAK PURLIN SETBACK.

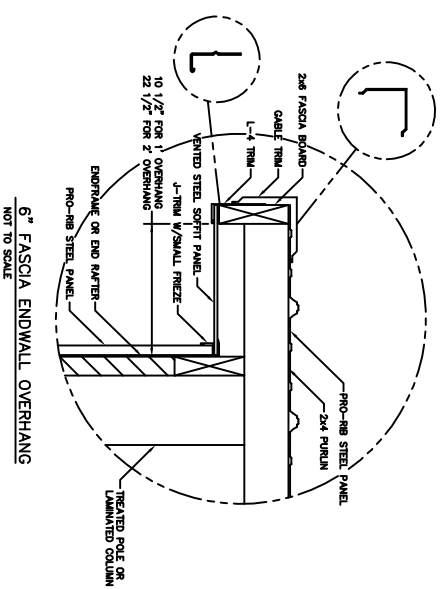
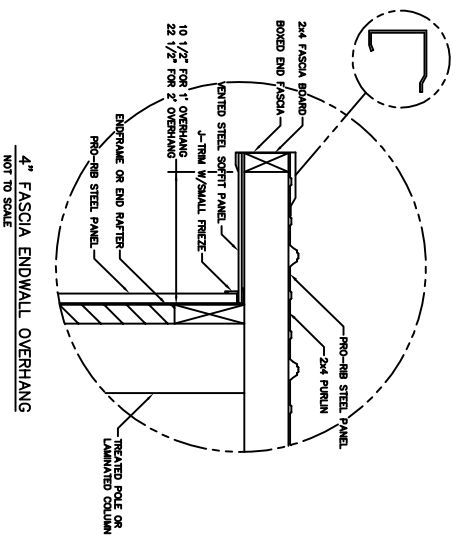
**NOTE:**  
UNIVERSAL RIDGECAP REQUIRES  
8" PEAK PURLIN SETBACK.

—EXTEND STEEL, PAST PEAK  
—PURLIN—OVERLAP VARES PER  
OWNER'S SPECIFICATIONS

# OVERHANG DETAILS

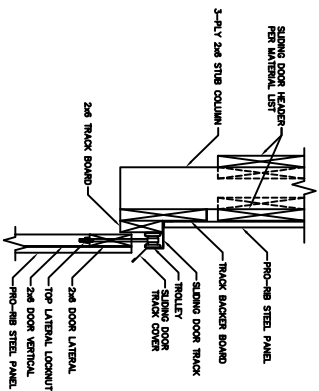


NOTE:  
SOFFIT TRUSSES ARE USED EAVE TRIM IS REPLACED BY CUTTER APRON.

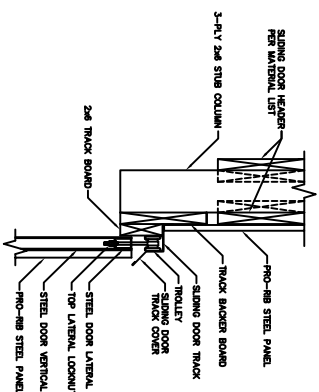




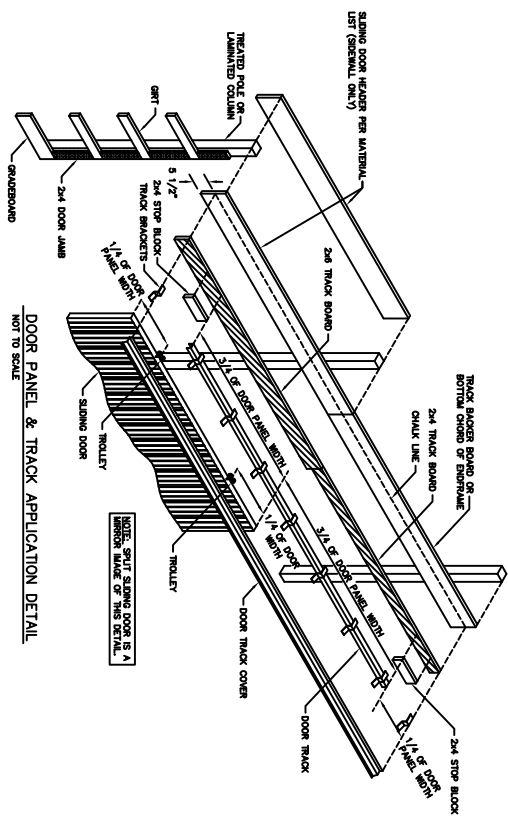
## SLIDING DOOR DETAILS



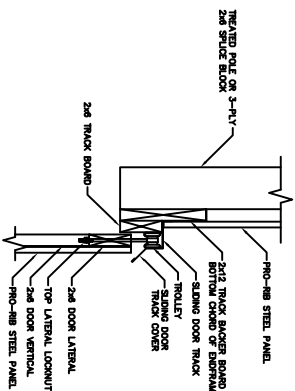
**WOOD & ALUMINUM SIDEWALL TRACK DETAIL**  
**NOT TO SCALE**



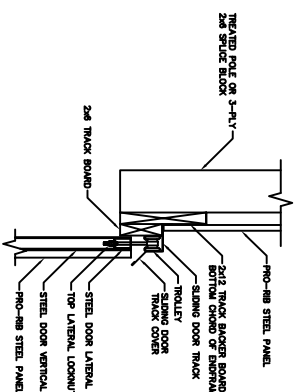
**STEEL FRAMED SIDEWALL TRACK DETAIL**  
**NOT TO SCALE**



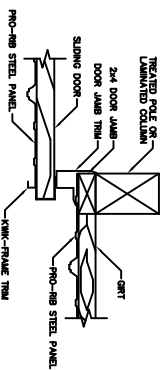
**DOOR PANEL & TRACK APPLICATION DETAIL**  
**NOT TO SCALE**



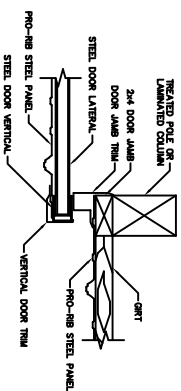
**WOOD & ALUMINUM ENDWALL TRACK DETAIL**  
**NOT TO SCALE**



**STEEL FRAMED ENDWALL TRACK DETAIL**  
**NOT TO SCALE**

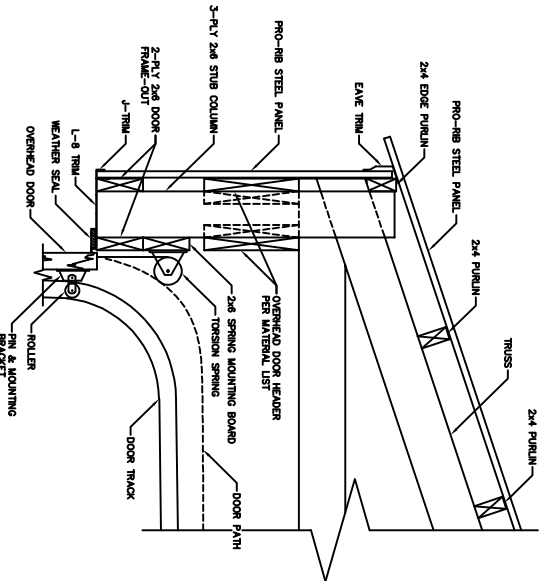


**WOOD AND ALUMINUM SLIDING DOOR JAMB DETAIL**  
**NOT TO SCALE**



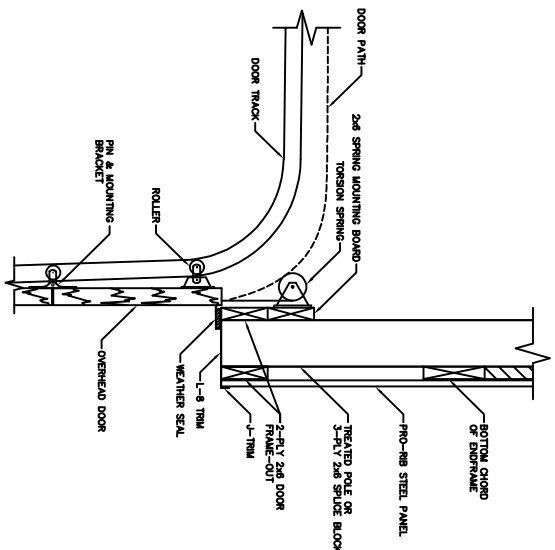
**STEEL FRAMED SLIDING DOOR JAMB DETAIL**  
**NOT TO SCALE**

OVERHEAD DOOR DETAILS



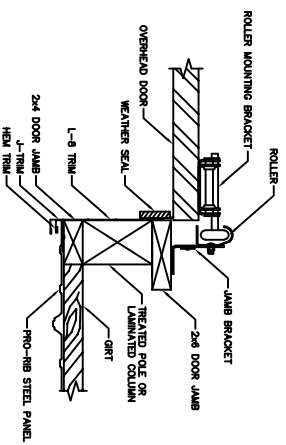
NOTE:  
OWNER/CONTRACTOR MUST VERIFY OVERHEAD DOOR  
MANUFACTURER'S INSTALLATION INSTRUCTIONS  
AND REQUIREMENTS WITH DOOR MANUFACTURER  
PRIOR TO STARTING CONSTRUCTION.

HEADER FRAMING SECTION @ SIDEWALL  
NOT TO SCALE



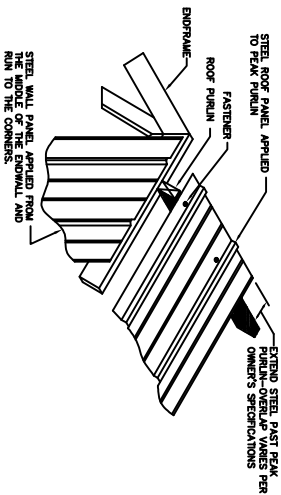
NOTE:  
OWNER/CONTRACTOR MUST VERIFY OVERHEAD DOOR  
MANUFACTURER'S INSTALLATION INSTRUCTIONS  
AND REQUIREMENTS WITH DOOR MANUFACTURER  
PRIOR TO STARTING CONSTRUCTION.

HEADER FRAMING SECTION @ ENDWALL  
NOT TO SCALE

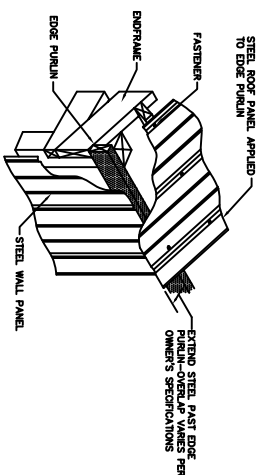


OVERHEAD DOOR JAMB DETAIL  
NOTE TO SCALE

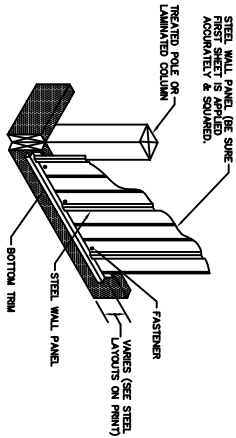
STEEL APPLICATION DETAILS



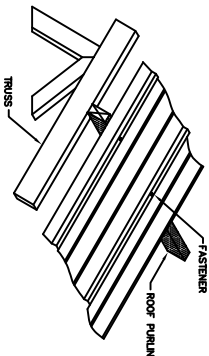
ROOF & ENDWALL STEEL APPLICATION @ GABLE PEAK



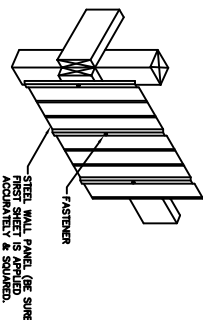
ROOF & SIDEWALL STEEL APPLICATION @ EAVE



WALL STEEL APPLICATION @ GRADEBOARD



ROOF STEEL APPLICATION @ INTERMEDIATE



WALL STEEL APPLICATION @ INTERMEDIATE

